

Exe Valley 1960

- **Exeter and the Exe Valley:** On **27th October 1960** over **60mm** of rain fell on an already wet catchment. 700 cubic metres per second flowed through Exeter **flooding a 1000 homes.**
- On the **4 December 1960**, **80mm** fell and a further **1200 homes were flooded.** Flood depths of over 2m were recorded in the streets alongside the river. The flood was thought to have a 1 in 50 year, 2% chance in any one year return period. As a result of these floods the Exeter flood alleviation scheme was built.

Oakfordbridge – River Exe



Tiverton – 500 homes flooded



M) Floods in West Exe South.

Tiverton – No Parking!



Tiverton – The Walronds

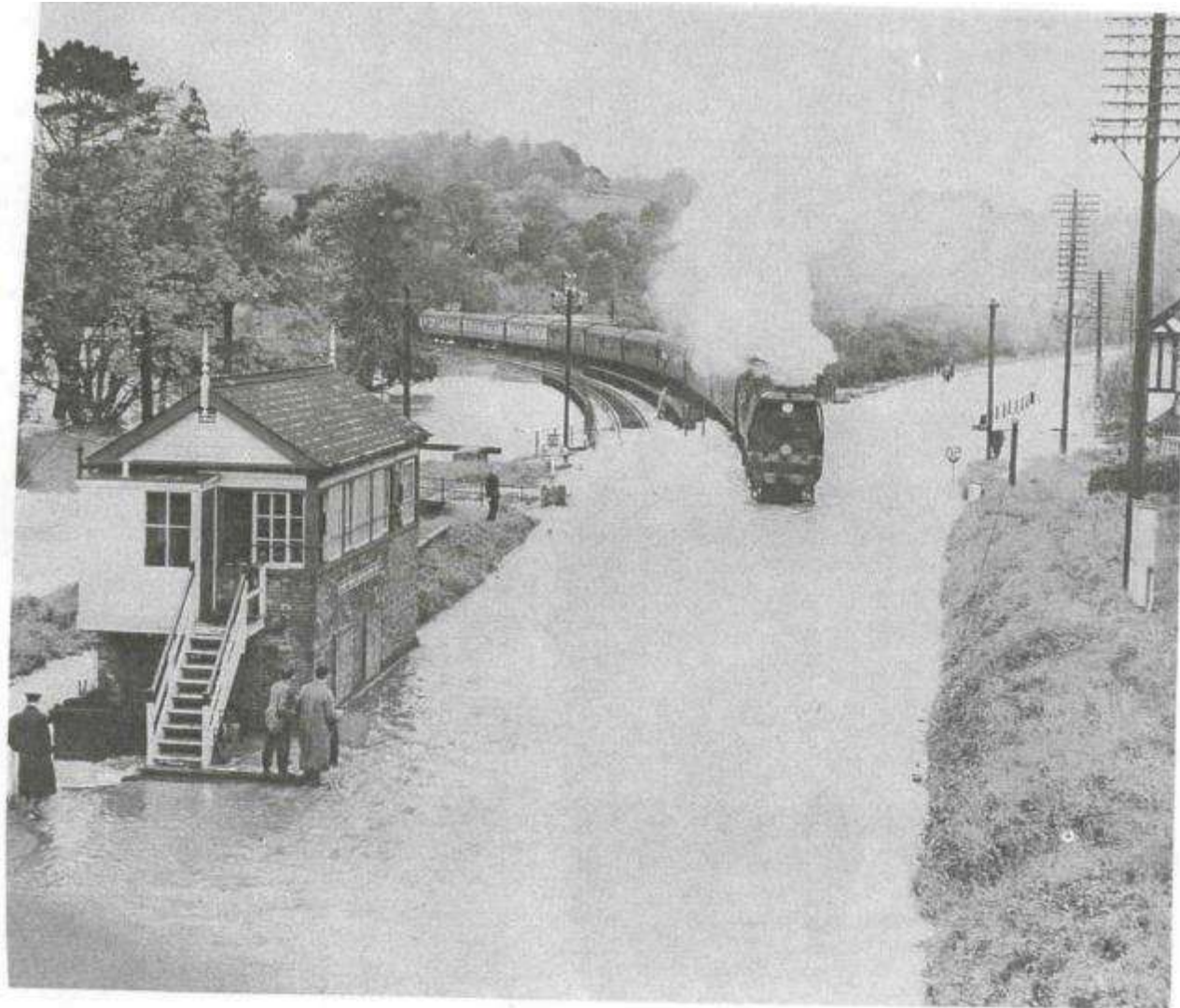


Fordton , Nr Crediton



14. Main Street of Fordton after 1960 Floods

Cowley Bridge - Exeter



No. 3. Cowley Weir looking upstream from Cowley Road Bridge, showing flooding of railway tracks, on 28th October, 1960

Exeter – Okehampton Street 27 October 1960



Exeter – Cowick Street 4th December 1960



EXMOUTH - Exeter Road Oct 1960



East Devon Flood Event

- During the evening of **10 July 1968** a thunderstorm event crossed East Devon. Nearly **150mm** of rain fell in 5 hours. Many communities were affected including Sidmouth where over a **150 homes were flooded**. The main road and bridge at Fenny Bridges was swept away. 5 people died. At the time, the return period of this event was thought to be 1 in 400 years.

Flood Level on River Yarty at Bishopswood



Fenny Bridges July 1968



Colyton – 10 July 1968



Tipton St John flood level



Sidmouth October 1960



5. Mill Lane looking North, Sidmouth.

Sidmouth



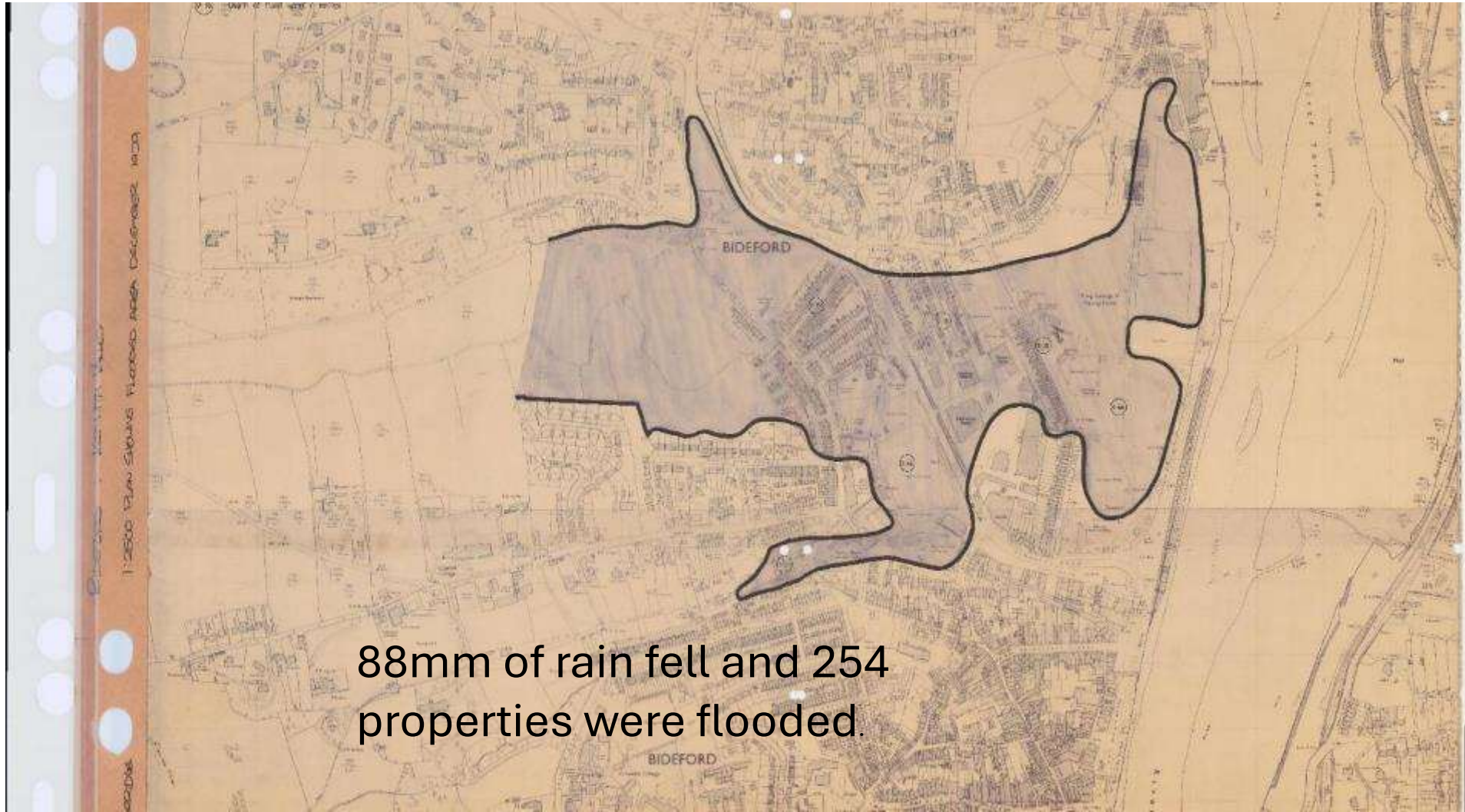
Tidal flooding at Totnes Feb 1974



Tidal flooding at Totnes Feb 1974



Bideford December 1979



88mm of rain fell and 254 properties were flooded.

Bideford June 1993



216 houses and industrial premises flooded

Barnstaple

