

DORSET

PREPARED



DORSET

Local Resilience Forum

Community Emergency Contact Hubs: the development of societal resilience in Dorset

Clare Jennings

Community Resilience Liaison Officer- Dorset LRF

clare.jennings@dorsetcouncil.gov.uk

Dorset Council Emergency Planning and Resilience Team

- **Service Manager for Assurance**

- Marc Eyre

- **Emergency Management and Resilience Officers**

- Ovi Rominger

- Nigel Osborne

- Jess Rice

- Julia Long

- Georgie Connelly

- **Clare Jennings – Community Resilience Liaison Officer**



What I do...

National Resilience Framework GOV.UK

A developed and shared understanding of the civil contingencies risks we face is fundamental

Prevention rather than cure wherever possible: a greater emphasis on preparation and prevention

Resilience is a 'whole of society' endeavour, so we must be more transparent and empower everyone to make a contribution



How I do it...

- Layers
- Address...
 - Dorset County
 - New Community Resi
 - Council presentatio
 - Family Event
 - DAPTC Event
 - Community Event
 - CERP Development
 - Flood collaboratio
 - Partner collaborati
 - School presentation
 - Community Hub de
 - General Engagemen
 - Aerial Photography
 - APGB Aerial - Lat
 - APGB Aerial - 201
 - DC Aerial - 2014/
 - DC Aerial - 2009
 - APGB Aerial - 202
 - DC Aerial - 2005
 - DC Aerial - 2002
 - Processed Imagery
 - APGB Tinted S
 - APGB Infra-re
 - Basemaps
 - Ordnance Survey L
 - MasterMap
 - Ordnance

Where I do it...



Community Emergency Hub Development

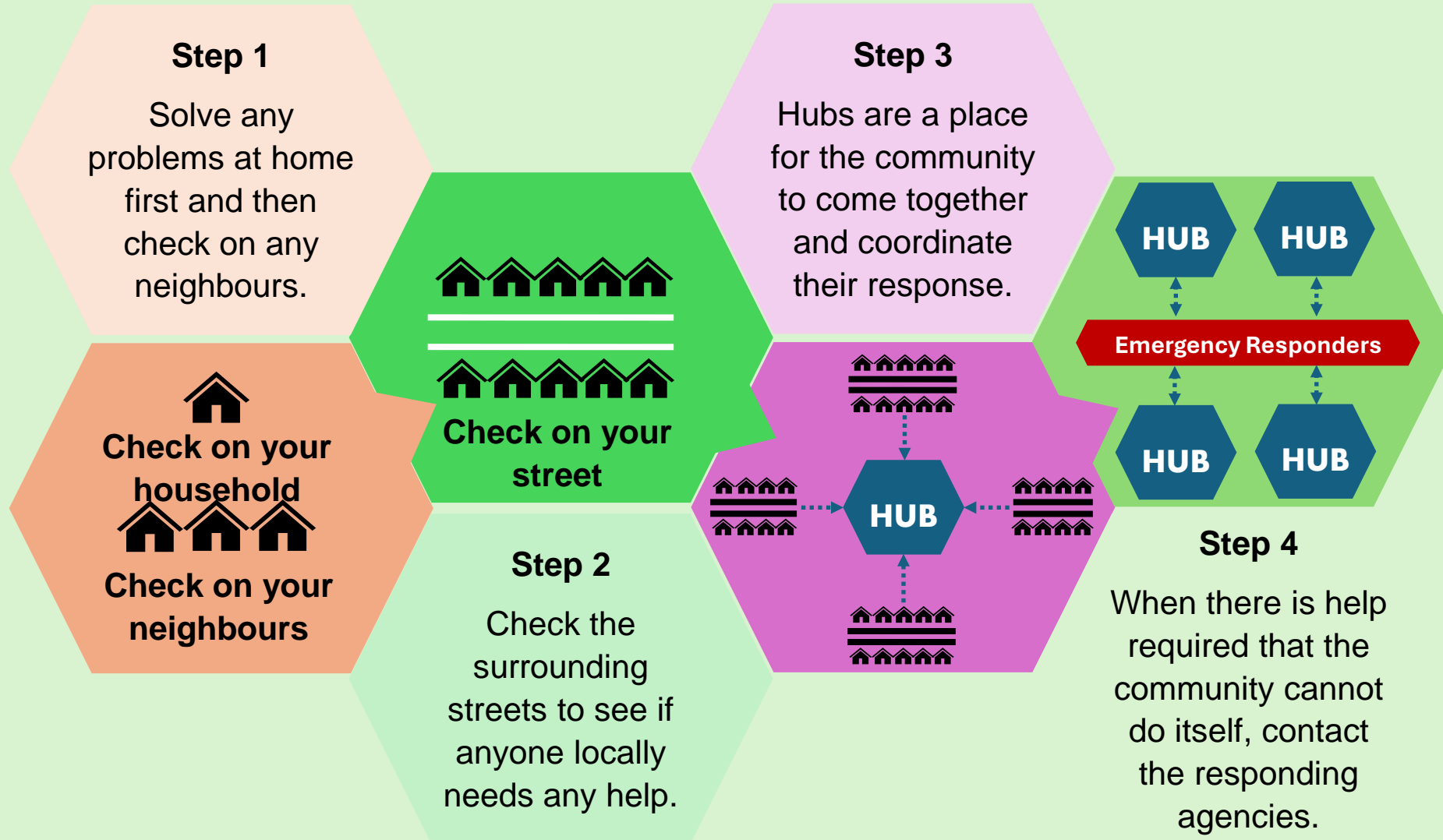
Dorset Council
Wiltshire and Swindon
LRF





WSLRF Emergency Hubs

The Process

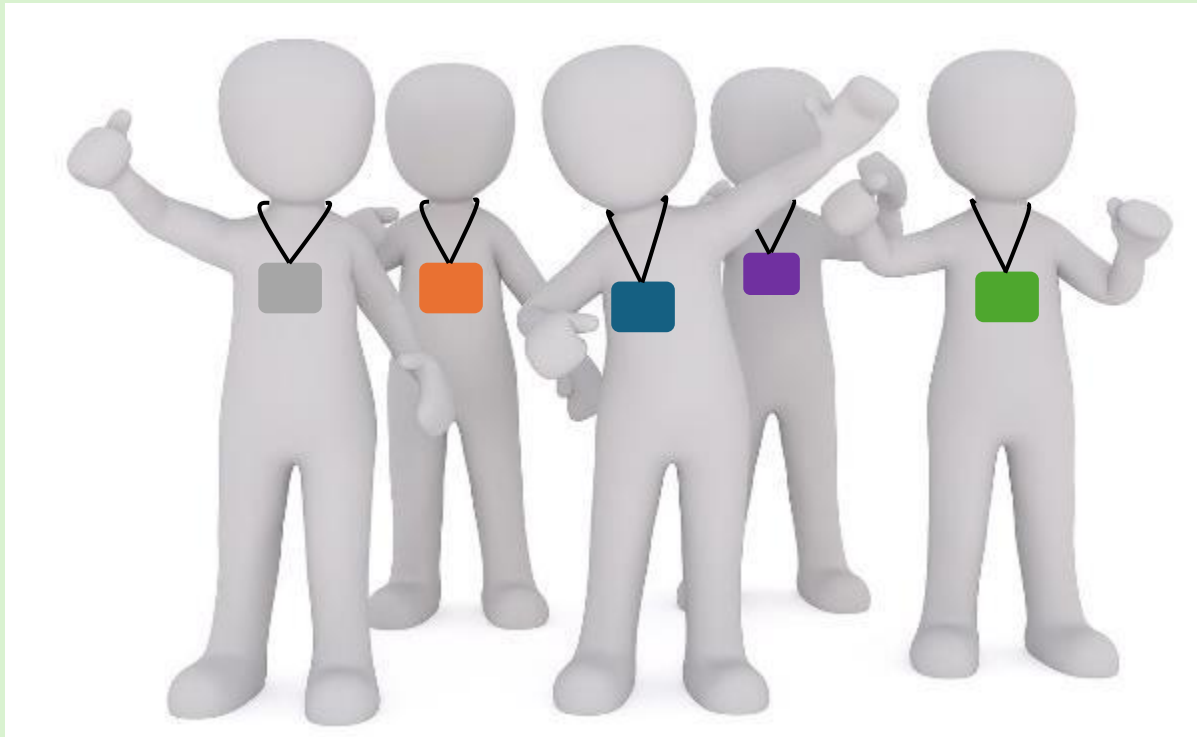




The Location Any Building



WSLRF Roles



Hub Supervisor

Information Officer

Receptionist

Public Information Officer

Welfare Officer

Needs and Offers Officer

Facilities Management

WSLRF Provided Packs

Every hubs gets:

- Hub Guide
- Map of area
- Lanyards and role cards
- FAQs
- Log book
- Sticker for the window
- Posters





Link with other plans and processes

This can be the one stop shop for Emergencies

- Warm Hub
- Cold Hub
- Evacuation Point
- Water distribution sites



Dorset Council Emergency Hubs

**Using all the good ideas
from WSLRF...**

Process

Location ideas

Roles

**...to build a community
hub plan for Dorset.**

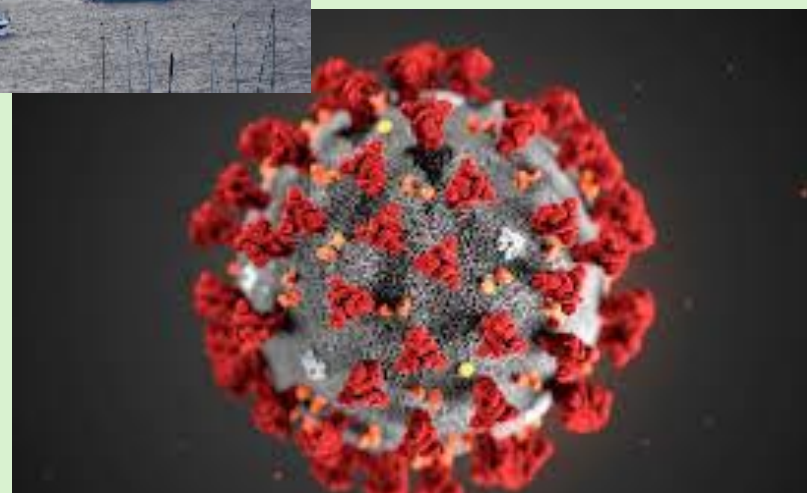


Dorset Community Risk Register 2024 (scoring Very High – Low)

Ref	Risk Name	Impact	Likelihood	Risk Rating
R50a	Failure of the national electricity transmission system (NETS)	5-Catastrophic	3-Medium Low	Very High
R51	Failure of gas supply infrastructure	4-Significant	3-Moderate	Very High
R71	Severe Space weather	4-Significant	4-Medium High	Very High
R73	High temperature and heatwaves	4-Significant	3-Moderate	Very High
R74	Low temperatures and snow	4-Significant	4-Medium High	Very High
R75a	Coastal flooding	4-Significant	3-Medium	Very High
R75b	Fluvial flooding	4-Significant	3-Medium	Very High
R75c	Surface water flooding	4-Significant	3-Medium	Very High
R78	Pandemic	5-Catastrophic	4-Medium High	Very High
R79	Outbreak of an emerging infectious disease	4-Significant	4-Medium High	Very High
DL2	Localised flooding caused by groundwater emergence/spring activity	3-Moderate	4-Medium High	High
DL3	Land Movement (e.g. significant landslips, rockfalls)	3-Moderate	4-Medium High	High
R49	Simultaneous loss of all fixed and mobile forms of communication	3-Significant	3-Medium High	High
R50b	Regional failure of electricity network	3-Moderate	3-Medium	High
R53	Radiation release from overseas nuclear site	5-Catastrophic	1-Low	High
R62	Reservoir / dam collapse	4-Significant	2-Medium Low	High
R66	Wildfire	3-Moderate	4-Medium high	High
R67	Volcanic eruption	3-Moderate	4-Medium High	High
R72	Storms	3-Moderate	4-Medium	High
R80a	Major outbreak of foot and mouth disease	4-Significant	2-Medium Low	High
R80b	Major outbreak of highly pathogenic avian influenza	3-Moderate	3-Medium	High
R86	Industrial action - fuel supply	3-Moderate	3-Medium	High
DL1	Radioactive Release during visit of nuclear-powered vessel (NPV) to Portland Port	3-Moderate	1-Low	Medium
DL4	Bridge Closure due collapse	4-Medium High	1-Minor	Medium
R28a	Cyber-attack – government critical systems loss (public)	2-Limited	5-High	Medium
R36	Major social care provider failure	2-Limited	4-Medium High	Medium
R37	Insolvency of supplier(s) of critical services to the public sector	2-Limited	3-Medium	Medium

Dorset Emergency Incidents

DORSET
PREPARED



Community Emergency Hub Development

Community Emergency Contact Hub Guide



The purpose of a Community Emergency Contact Hub:

Provide a safe gathering place for members of the community to support each other

Provide a framework for setting up and operating a hub in an emergency

Help to identify and manage the problems your community has in an emergency using your own skills and resources

Provide a location for information sharing between community members

Community Emergency Contact Hub Guide

What's in this guide?



This guide is designed to help you set up and run your community Emergency Contact Hub. Although in an ideal world everyone would read the whole guide, it is designed that you can easily skip to the part that is pertinent to you or your community at that time.

Section 1



Working as part of a team

Section 2



Setting up the hub

Section 3



Your community response

Section 4



Recovery



The Need



To help reduce the gap between responding agencies and communities

To help focus on Whole of Society Resilience

To have a solution in place in communities where there's no defined 'community emergency group'

To give communities who want to help the opportunity to help

To reinvigorate the good work from communities during Covid

To provide information and a safe place during an incident



The Purpose



Provide a safe gathering place for members of the community to support each other



Provide a framework for setting up and operating a hub in an emergency



Help to identify and manage the problems your community has in an emergency using your own skills and resources



Provide a location for information sharing between community members

Dorset Council Hub Development



- Iwerne Minster – Council led (larger Community, with School)
- **Langton Herring and Rodden** – Community led (Small Community)
- Lytchett Minster and Upton – Council led – (large community (Initial approach only, may require more than one hub))
- **Osmington** – Community led
- **Studland** – Community led
- Hazelbury Bryan – Council led

Three communities chosen to trial documentation

Initial visit and presentation

Support throughout the trial process

Feedback and review



DORSET
PREPARED



- Chris Manuel - WSLRF
- Camella Town - WSLRF
wiltshireandswindonprepared@wiltshire.gov.uk
- Clare Jennings – Dorset LRF
- Nigel Osborne – Dorset LRF
[Dorset Local Resilience Forum | Community Resilience Hub | Dorset \(dorsetprepared.org.uk\)](http://Dorset Local Resilience Forum | Community Resilience Hub | Dorset (dorsetprepared.org.uk))



WSLRF Costs

- Costs for:

Lanyards

Window Stickers

Printing of:

Logbooks, Posters,

Guide, Role cards,

Maps

