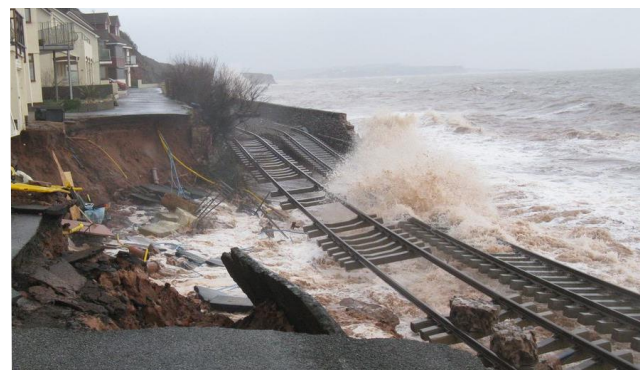




# Climate Adaptation Strategy for Devon, Cornwall & Isles of Scilly

Emily Reed – Devon Climate Emergency

at Devon Prepared – Whole Society Resilience Forum



Climate Resilient  
DCIoS

# Presentation outline:

- Who developed the Strategy?
- What does the Strategy cover?
- How is it being monitored and implemented?
- How might you find the Strategy and resources useful?
- What can communities do to adapt to climate change?
- Where to find out more information?

# Co-developed between the DCIoS Climate Impacts Group and RSK

**RSK**



**wrc**



# What this Strategy entails

There are three parts to the Strategy:

The **Risk Register**, which identifies regional climate impacts and their risks and opportunities

64

An **Adaptation Plan**, which sets out how the region can create the conditions for everyone to adapt to climate change together over the next five years.

An **Action Plan**, which sets out the priority actions for regional collaboration over the next 2 – 3 years

14

# Climate Change In The Region Will Look Like:



DRIER SUMMERS AND  
AN INCREASED  
LIKELIHOOD OF  
DROUGHTS



HOTTER SUMMERS  
AND AN INCREASED  
LIKELIHOOD OF  
HEATWAVES AND  
EXTREME HEAT



MILDER, WETTER  
WINTERS WITH AN  
INCREASE IN  
RAINFALL INTENSITY  
AND FREQUENCY



LESS SNOWFALL,  
FROST AND ICE



INCREASE IN THE  
RISK OF  
WILDFIRES



RISING SEA LEVELS



INCREASE IN THE  
INTENSITY AND  
FREQUENCY OF STORMS



SHIFT IN THE GROWING  
SEASONS



MILDER WINTERS AND  
CHANGES TO PEST AND  
DISEASE PRESSURES

# Main impact themes covered



**Flooding (river and surface water)**



**Temperature (extreme heat/cold)**



**Sea level rise (coastal flooding and erosion)**



**Reduced water availability (drought)**

# Sectors considered in the Strategy

## Five Sectors

This Strategy covers five sectors (broadly corresponding with those highlighted in the UK's national climate risk assessment):



Natural Environment (including agriculture and forestry)



Infrastructure



Health and the built environment



Cross-cutting (including international dimensions)



Business and industry

# The Adaptation Plan: Creating the conditions for everyone to act

- **Signpost to information helpful for developing local adaptation plans** and place-based priorities.
- Help **set expectations about who is responsible for various elements of adaptation planning**, so that those developing their own plans know who to contact.
- Include **case studies to illustrate** what the potential impacts might be of climate change and how communities can adapt.



# Implementation and Monitoring

- The Devon, Cornwall and Isles of Scilly Climate Impacts Group meets monthly to:
  - **Review risks in the register**, incl. raising new risks.
  - **Review progress against the Action Plan** (RAG rated) – incl. issues and anticipated future activity.
  - Identify opportunities for collaboration.
  - Identify funding opportunities.
- The progress report is published on the [Devon Climate Emergency](#) website twice yearly.

# Using the Strategy –community groups

- Use the regional risk register and adaptation actions identified to inform your own risk register and action planning.
- Explore the [resources on the website for community groups](#)– share any additional resources with us.

# What actions can you take?

- Establish and operate a local **Community Resilience Group** (or similar existing group) and develop a **community adaptation plan** and **emergency response plan**.

## Individual property-level adaptation actions may include:

- Check your insurance coverage levels and limitations.

---

- Install rainwater harvesting, such as a water butt.
- Upgrade your household water fittings to reduce your water use.
- Switch to water-efficient appliances.

---

- Increase your property's resilience to flooding.
- Increase the capacity of guttering down-pipes.
- Choose porous surfaces for your driveways and paths.

---

- Add solar shading to the south façade of buildings and/or introduce passive cooling measures to reduce heat impacts.
- Fit insect screens where needed.
- Maintain building structure, including roofs.



# Find out more

- [climateresponse.org.uk](https://climateresponse.org.uk)
- Follow and engage with the project on social media:

Twitter	@devonclimate
Instagram	@devonclimateemergency
Facebook	@DevonClimateEmergency
- [Emily.Reed@Devon.Gov.UK](mailto:Emily.Reed@Devon.Gov.UK)

**Any questions?**