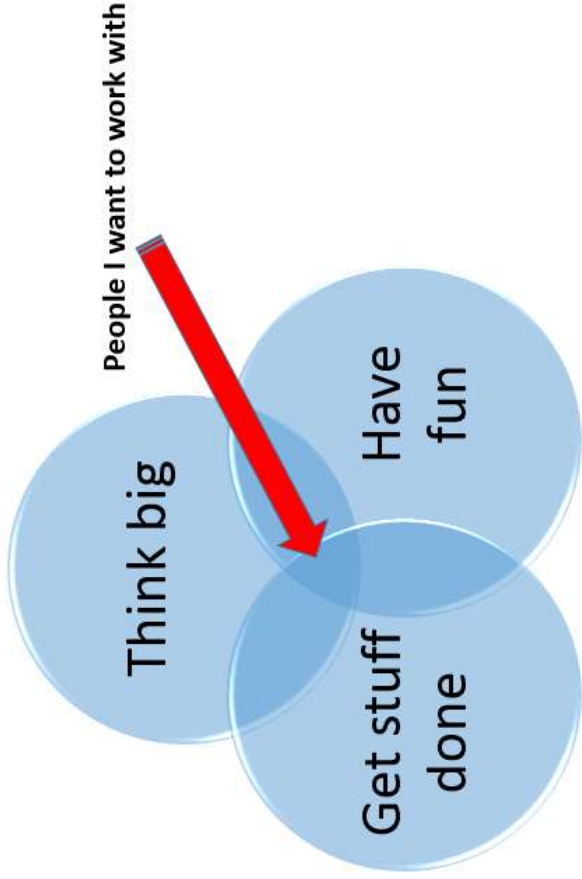


Dr Crystal Moore

Climate resilience activist, future farmer, scientist, mum & qualified optimist

Act 1: Shake & stir;

Act 2: Rethink & feel optimistic too 😊



SAVE MY WORLD

SAVE NO.



the green issue

Royal Mail First Day Cover



P.w. Elliott Esq.
10 Chapel Road
Alphington
EXETER, EX2 8TB

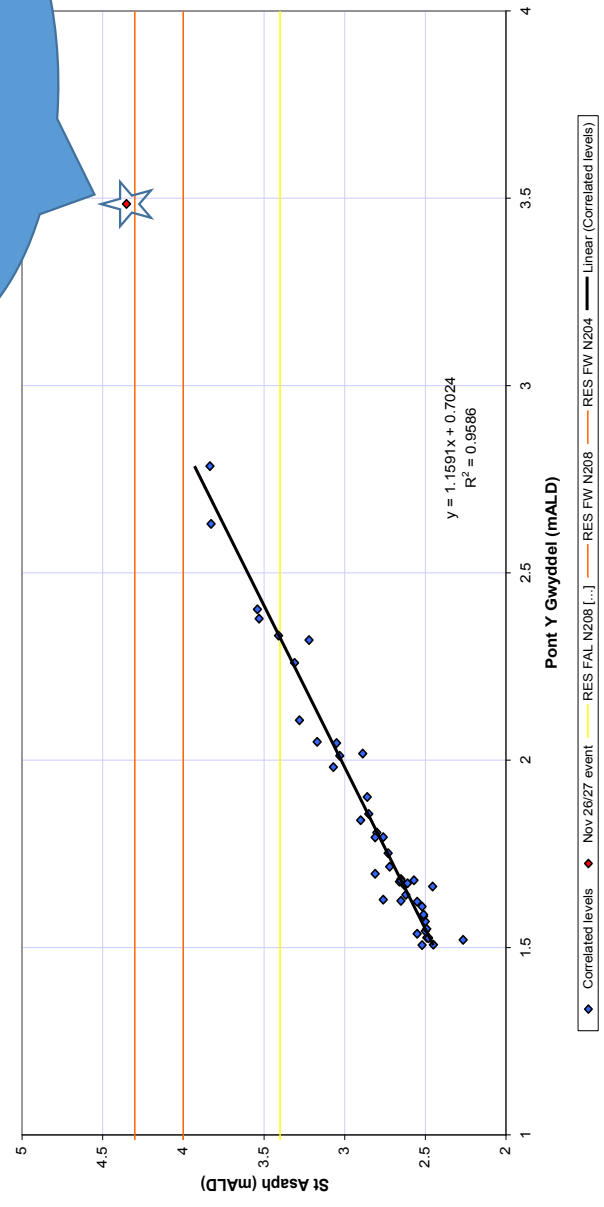
St Asaph Nov 2012

an extreme event



1:200 year event, new flood defences designed for 1:100

Pont y Gwyddel to St Asaph correlated levels
Developed Nov 2009



Learning from experience

- flood forecasting

- Summer 2012 Floods – **140** days of heightened flood risk with the wettest late spring and summer in 250 years
- Winter Floods 2013/14 – **138** days of heightened flood risk with the wettest winter in 250 years
- Winter Floods 2015/16 – **105** days of heightened flood risk with the second wettest winter in 250 years

AND often rapid transitions from drought to flood conditions

October						
Su	M	Tu	W	Th	F	Sa
				1	2	3
4	5	6	7	8	9	10
11	12	13	14	15	16	17
18	19	20	21	22	23	24
25	26	27	28	29	30	31

November						
Su	M	Tu	W	Th	F	Sa
1	2	3	4	5	6	7
8	9	10	11	12	13	14
15	16	17	18	19	20	21
22	23	24	25	26	27	28
29	30					

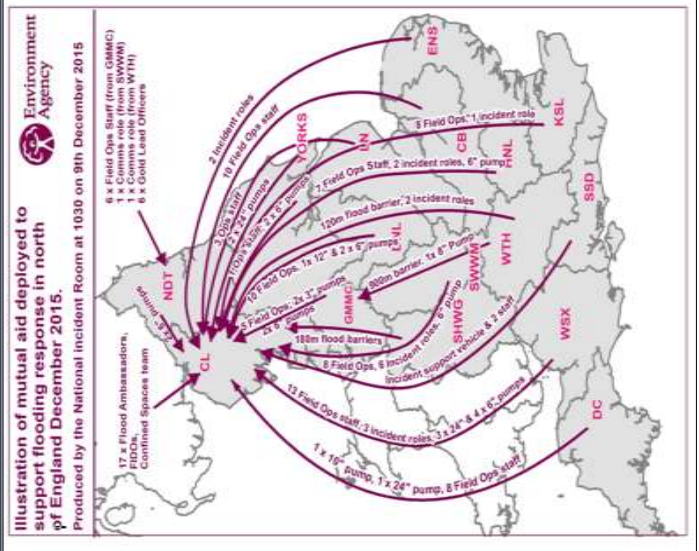
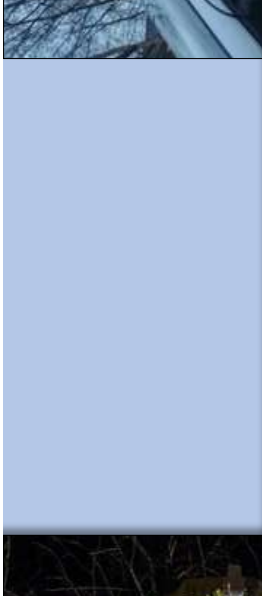
December						
Su	M	Tu	W	Th	F	Sa
		1	2	3	4	5
6	7	8	9	10	11	12
13	14	15	16	17	18	19
20	21	22	23	24	25	26
27	28	29	30	31		

Winter 2015/16 Cowling© Calendar

January						
Su	M	Tu	W	Th	F	Sa
					1	2
3	4	5	6	7	8	9
10	11	12	13	14	15	16
17	18	19	20	21	22	23
24	25	26	27	28	29	30
31						

February						
Su	M	Tu	W	Th	F	Sa
	1	2	3	4	5	6
7	8	9	10	11	12	13
14	15	16	17	18	19	20
21	22	23	24	25	26	27
28	29					

March						
Su	M	Tu	W	Th	F	Sa
		1	2	3	4	5
6	7	8	9	10	11	12
13	14	15	16	17	18	19
20	21	22	23	24	25	26
27	28	29	30	31		



BREAKING NEWS FLOOD WARNINGS 94 FLOOD WARNINGS ENGLAND AND WALES
 527 NEWS
 527 NEWS
 527 NEWS

Commitment to learn & share

Learning from experience winter 2015/16

- **connectivity of events** (antecedent conditions) and how we carry forward that knowledge and adapt to sensitivity changes during long running events
- **communicating rainfall**: how much, for how long, over what area (local vs widespread) and intense pulses
- providing **coherent scenarios** (best estimate, reasonable worst case and extreme worst case)
- **communicating confidence**: components of confidence from meteorology, hydrology, hydraulics, impacts, community resilience, asset issues
- **supporting decisions and judgements** at longer lead times especially at 36/48 hours and low likelihood, high impact events; flagging possible escalation and pace of progression
- **improving impact descriptions**; real world descriptions of forecast impacts to engage
- **earlier flagging of potential severe impacts**; signatures of extreme events, recognition of tipping points, communication of moving impact columns in risk matrix



Science, communication, action!

2017-07-18 09:00Z



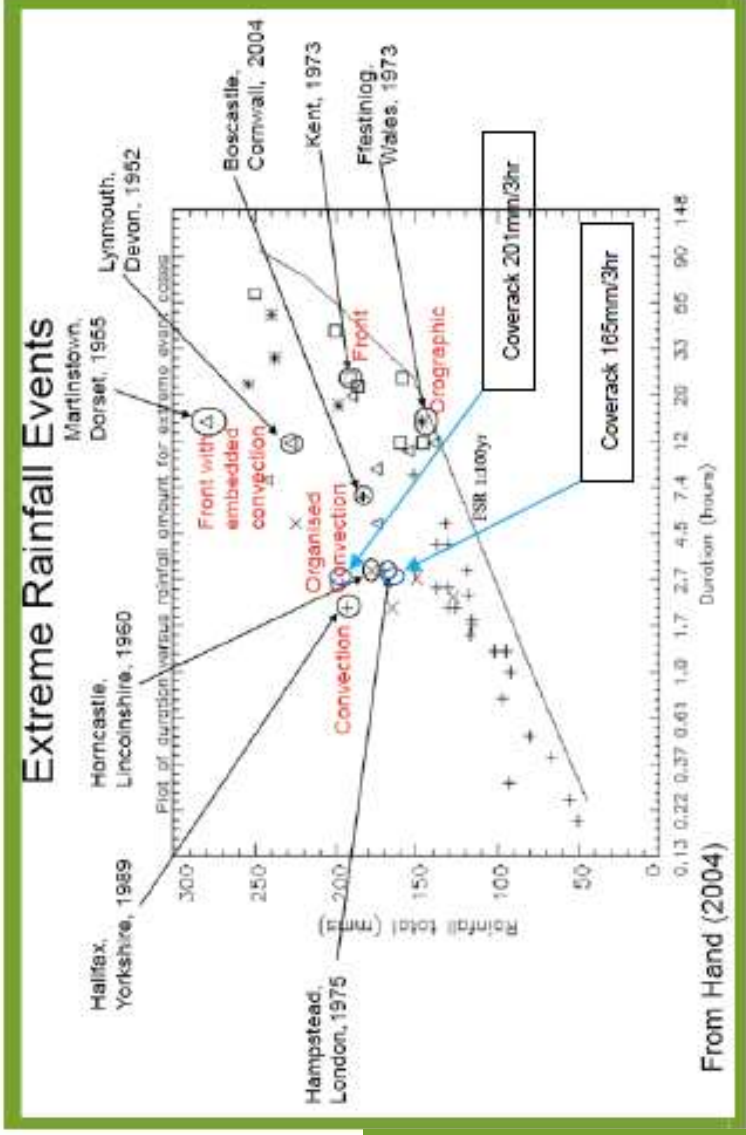
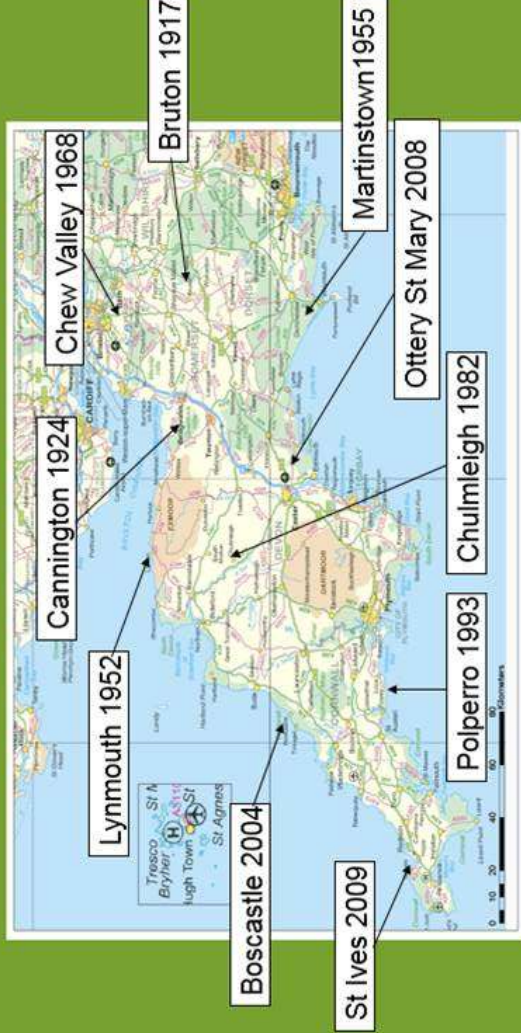
Met Office



Coverack – an extreme but not unusual event

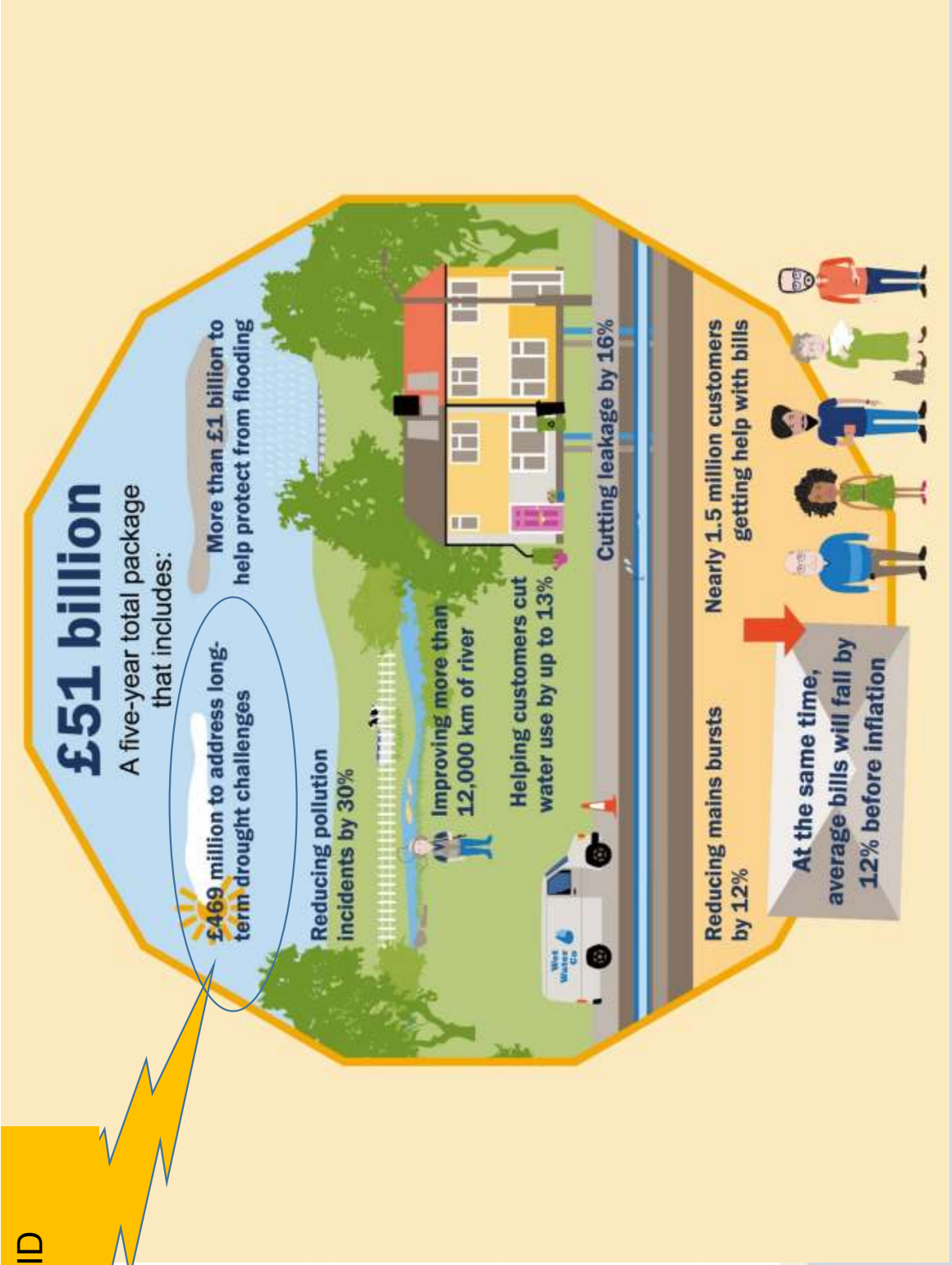
- UK rainfall record for 3hrs
- 165mm-201mm rainfall 3/hrs
- 3x monthly rainfall average of July

How rare are extreme flash floods?



It's also about too little water!

The spark that RAPID provides



Events can shift consciousness and redefine what is important



Global CO₂ emissions are down 5.5% vs 2019 so far

To keep in a temperature range of 1.5 degrees C we would need to reduce emissions by 7.6%

FOR EACH YEAR THIS DECADE

New widespread awareness of interdependency, what could this be the mid-wife of?

Opportunity – galvanize a nation in hope looking through a different lens



Qualified optimist: Rethink example a

Community & business working together to deliver renewable energy projects; combining head and heart

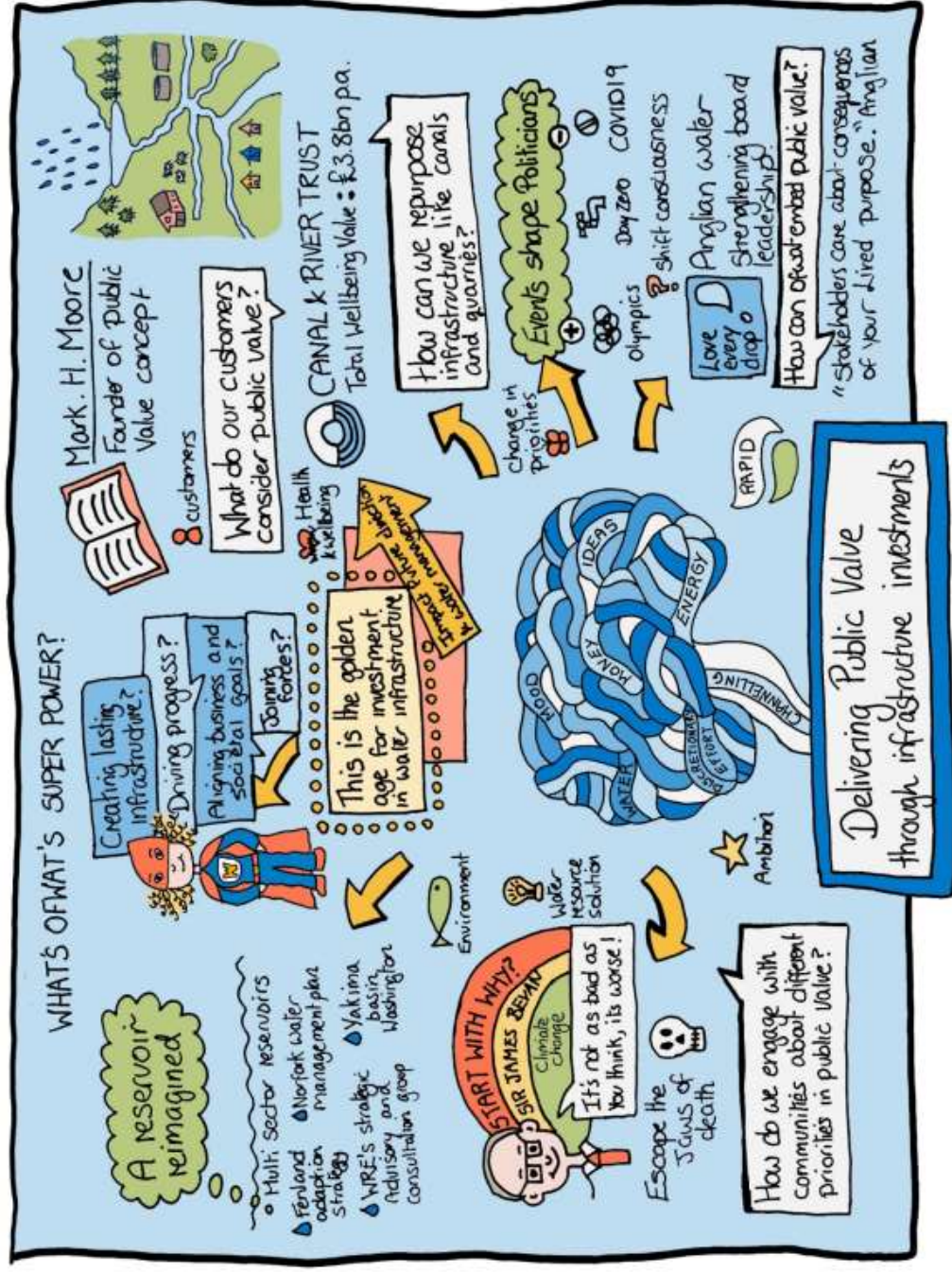


Positive Living in the 21st Century

*"You can't solve problems with the same kind of thinking that created them."
- Albert Einstein.*

Qualified optimist: Rethink example b

RAPID Public Value brain storming output



Qualified optimist: Rethink example c

Covid 19; Shared trauma as a pivot point towards a more humane choice of actions, stable geopolitics & climate resilience

‘Forests of Humanity’ ... a concept that....

Builds forward better + Use arts to evoke a dream of becoming a better ancestor =

Promotion of whole society & economy recovery

(© original spark of inspiration = RI 😊)



(© Sand In Your Eye)

Tribe! our mission is to inspire a nation to;

See it, sense it, feel it!



